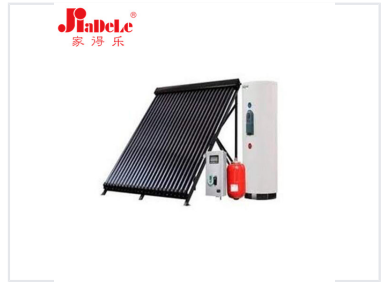


# Split Solar Water Heater System with Tank

This split solar water heater system provides heated water using solar energy. The system's design separates the collector from the tank, allowing flexible installation and improved performance.



## ADDITIONAL IMAGES



## Product Overview



Split system design separating the solar collector from the water tank for optimal integration.

## High-Efficiency Split Solar Water Heating

This split solar water heater system features a separated tank and collector design, allowing for seamless integration with building architecture without compromising aesthetics. The upright tank structure effectively prevents the mixing of cold and hot water, while the minimized pipe distance ensures instant hot water delivery and reduced thermal energy loss. Equipped with an integrated electric backup heater, this system guarantees a reliable hot water supply even during periods of limited sunshine.

## System Configuration

DIFFERENT FAMILIES DIFFERENT CHOICES



System sizing guide matching tube configurations to household size requirements.

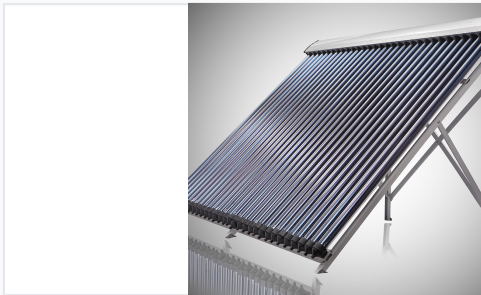
### Recommended Capacity by Household Size

Tube Configuration	Household Size
18 tubes	2-3 people
20 tubes	3-4 people
24 tubes	4-5 people
30 tubes	5-6 people
36 tubes	6-7 people

### Tank Capacities

100L, 150L, 200L, 250L, 300L, 400L, 500L

## Technical Specifications



Evacuated tube collector array designed for maximum solar energy absorption.



Durable, insulated storage tank designed for efficient heat retention.

Inner Tank Material	Stainless steel SUS304 (1.2mm) or Porcelain
Outer Tank Material	Stainless steel SUS201 (0.6mm) or Painted steel (0.6mm)
Insulation Thickness	60 mm
Insulation Material	Polyurethane
Vacuum Tube Model	QB-AL-N/AL-58-1800
Frame Material	Stainless steel SUS201 (1.2mm) or Galvanized steel (1.5mm)
Maximum Operating Pressure	6 bar
Test Pressure	10 bar

## Features & Accessories



Detailed view of system components including T.P valve, expansion tank, and circulation station.

### Included Components

- Electric backup heater
- Temperature and pressure relief valve
- Temperature sensor
- Copper coil heat exchanger