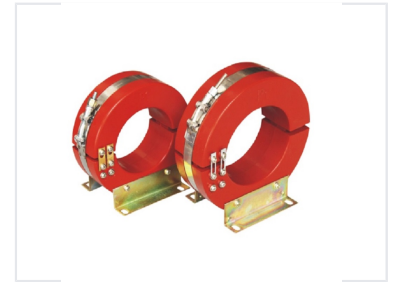
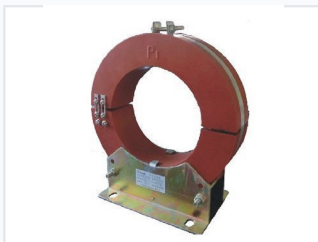


Split Core Zero Sequence Current Transformer

This split core zero sequence current transformer is designed for detecting earth fault currents. Its split-core design allows installation around existing conductors without disconnecting them, making it suitable for electrical power systems for protection and monitoring.



ADDITIONAL IMAGES



Product Overview

LXK Series Zero Sequence Current Transformer

The LXK series is an open-close type zero sequence current transformer designed for residual current detection and grounding protection in small grounding current systems. Featuring an epoxy resin casting structure, this split-core design allows for installation without disconnecting existing cables, significantly simplifying setup and maintenance. It is engineered for indoor use with relay and signal devices, ensuring reliable protection and monitoring in power distribution networks.

Technical Specifications

Installation Method

Split-Core • Open-Close • Indoor

| | |
|--|---------------------|
| Rated Frequency | 50/60 Hz |
| Rated Voltage | 35 kV |
| Secondary Winding Insulation (to ground) | 3 kV |
| Insulation Material | Epoxy Resin Casting |

Available Models

Nominal Inner Diameter Options

- $\text{Æ}80$
- $\text{Æ}100$
- $\text{Æ}120$
- $\text{Æ}140$
- $\text{Æ}150$
- $\text{Æ}160$
- $\text{Æ}180$
- $\text{Æ}200$
- $\text{Æ}240$
- $\text{Æ}260$
- $\text{Æ}300$

Performance Metrics

Performance Data

| Parameter | Value/Range |
|---------------------|---------------------------|
| Rated Current Ratio | 50-600/1 A or 150-300/5 A |
| Accuracy Class | 5P10, 5P20 |
| Capacity | 1-15 VA |