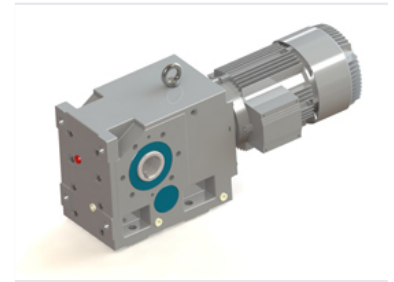


# Spiral Bevel Gear Reducer

This spiral bevel gear reducer is designed for robust industrial applications. It features precision-engineered spiral bevel gears within a heavy-duty housing for efficient power transmission.



## Overview

### KC Series Spiral Bevel Gear Reducer

The KC series spiral bevel gear reducer is engineered for robust industrial applications requiring reliable power transmission. Featuring a heavy-duty housing and precision-machined spiral bevel gears, this unit is built to handle high torque demands. It is designed for seamless integration with directly coupled electric motors, ensuring consistent performance in demanding environments.

## Technical Specifications

|              |  |
|--------------|--|
| Gear Type    | Spiral Bevel                             |
| Construction | Heavy-duty housing, Precision-engineered |

## Performance

### Key Performance Metrics

|  |                                       |
|--|---------------------------------------|
| <b>1 Yes</b><br>High Torque Capability | <b>1 Yes</b><br>Direct Motor Coupling |
|--|---------------------------------------|