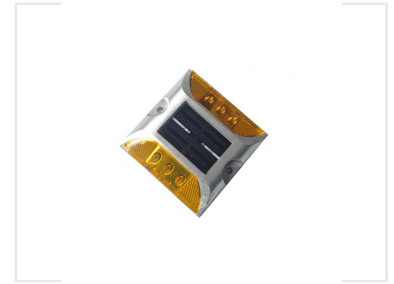


# Solar Powered Road Stud

Solar-powered road studs enhance visibility and safety on roadways. These durable markers feature integrated solar panels for charging and bright LED illumination for clear delineation.



## ADDITIONAL IMAGES



## Product Overview

### Solar Powered Road Studs for Enhanced Road Safety

These solar-powered road studs are engineered for high visibility and robust performance in demanding traffic environments. Featuring an integrated solar charging system, they provide reliable illumination to clearly delineate roadways, edges, and hazardous areas during nighttime or low-visibility conditions. The rugged construction is designed to withstand heavy traffic loads and harsh weather, making them an ideal solution for long-term infrastructure safety.

## Physical Specifications

Dimensions	100 x 100 x 20 mm
Housing Materials	Aluminum, PMMA

## Performance

### Primary Applications

- Roadway lane marking
- Edge lining
- Hazard warning
- General traffic safety

### Key Features

Solar Powered • High-Visibility LEDs • Weather Resistant • Heavy Traffic Durable

Power Source	Integrated Solar Panel
--------------	------------------------