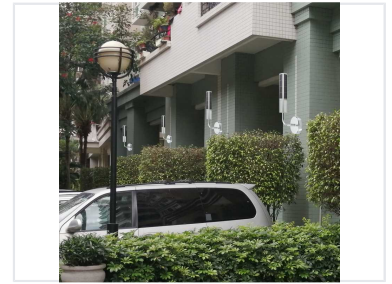


# Solar Powered LED Outdoor Wall Light

This solar-powered LED wall light is designed for outdoor decorative lighting. It has a 4W solar panel and a 2AH battery, providing a working time of 12 hours and illuminates an area of 15 square meters.



## ADDITIONAL IMAGES



## Product Overview

### Sustainable Outdoor Illumination

This high-efficiency solar-powered LED wall light is engineered for durability and reliable outdoor performance. With its weather-resistant IP65 rating and extended battery life, it provides consistent illumination for pathways, patios, and building entryways. Its contemporary design combines sleek aesthetics with eco-friendly operation, making it an ideal choice for modern commercial and residential exteriors.

## Technical Specifications

### IP Rating

IP65

### Solar Panel Power

4 W

### Battery Capacity

2 AH

### Dimensions

5cm x 30cm

## Performance Metrics

### Illumination Area

**15 sqm**

Illumination Area

### Working Time

**12 Hrs**

Nightly Duration

## Durability

Expected Lifespan

5 years