

Smart Keyed Padlock with Task Management

This smart passive lock has the appearance of a mechanical lock but contains a standard smart lock cylinder. It is a high-security lock with information task management capabilities.



ADDITIONAL IMAGES

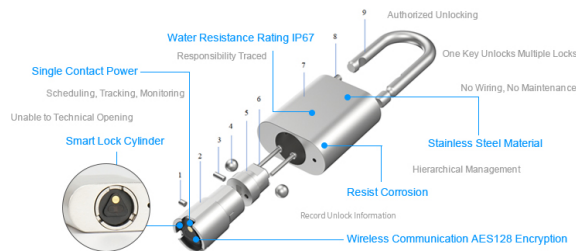


Overview

Smart Passive Lock Solution

This smart passive padlock combines the familiar form factor of a traditional mechanical lock with an advanced embedded smart cylinder. Designed for high-security environments, it features robust task management capabilities, allowing for scheduling, tracking, and detailed audit trails. The system operates without wiring, offering a maintenance-free security solution that integrates seamlessly into existing logistics and facility management workflows.

Technical Specifications



High-security features including AES128 encryption and IP67 water resistance.

Water Resistance Rating

IP67

Construction Material

Stainless Steel

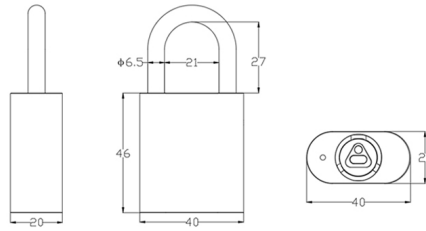
Security Encryption

AES128

Power System

Single Contact Power

Dimensions



WM-2000C-L40

Detailed dimensional drawing for the WM-2000C-L40 model.

Lock Dimensions (Model WM-2000C-L40)

Component	Dimension
Body Width	40mm
Body Depth	20mm
Body Height	46mm
Shackle Diameter	6.5mm
Shackle Internal Width	21mm
Shackle Height (from body)	27mm

Features

Customizable Management Software, Lock size and APP Not only cam lock and padlock but also other all kinds of locks just be free to tell us what you need



Centralized management software for real-time monitoring and access control.

Key Capabilities

- Authorized Unlocking
- One Key Unlocks Multiple Locks
- Hierarchical Management
- Responsibility Tracing
- Tamper Resistance (Anti-Technical Opening)
- Audit Trail Recording
- No Wiring Required

Applications

Applications Scenarios

Be widely used in logistics supervision, customs smart card, airport logistics coordination management, railway container management supervision application, vehicle management, bulk cargo terminal



Versatile application scenarios for logistics, transport, and facility management.

Common Use Cases

Logistics Supervision, Railway Containers, Airport Logistics, Power Cabinets, Industrial Cabinets, Communication Networks, Vending Machines, ATM Machines, Emergency Exits