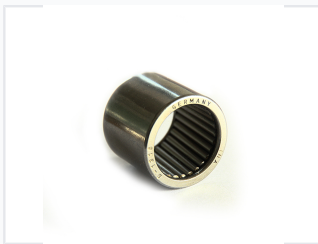


Small Bearing for C7C9 Pump

This small bearing is designed for use in C7C9 pumps. It is engineered for durability and reliable performance in demanding applications such as construction machinery.



ADDITIONAL IMAGES



Product Overview



Precision-engineered steel bearing designed for durability in construction excavator pump systems.

Professional Grade C7C9 Pump Bearing

This high-precision bearing is specifically engineered for C7C9 pump systems, commonly utilized in heavy-duty construction machinery and excavators. Manufactured in Germany, it features robust steel construction designed to minimize friction and ensure smooth, reliable performance under demanding operational loads. This component is an essential spare part for maintaining the efficiency and longevity of hydraulic pump systems.

Technical Specifications

Material	Steel
Weight	0.8 kg

Logistics and Trade

Global Reach

- South America
- North America
- Europe
- Middle East
- Africa
- Asia
- Australia

Shipping Options

DHL, FedEx, UPS, TNT, EMS, ARAMEX, Air Freight

Accepted Payment Methods

T/T, Western Union, MoneyGram, PayPal

Packaging Standards

Neutral packing or custom specified packaging