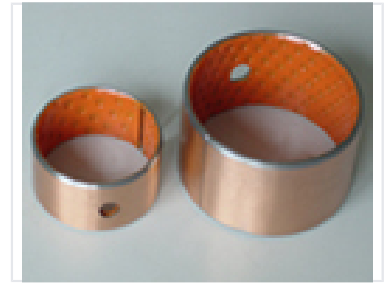


Sleeve Bushing Plain Bearing

These plain bearings, also known as bushings or sleeve bearings, facilitate sliding contact between moving parts. Constructed with a metallic outer shell and a specialized inner lining, they enhance wear resistance and reduce friction.



Product Overview

High-Performance Sleeve Bushing

These plain bearings are engineered to provide reliable sliding contact between moving mechanical components. Featuring a metallic outer shell paired with an advanced inner lining, they offer superior wear resistance and low-friction performance. Designed for durability, these bushings are essential for maintaining efficient motion in demanding industrial applications.

Technical Specifications

Common Industrial Uses

- Engines
- Pumps
- Rotational machinery
- Linear motion systems

Performance Key Metrics

0 Low

Friction Coefficient

Bearing Type	Sleeve Bushing / Plain Bearing
Material Composition	Metallic Shell, Wear-resistant Lining, Bronze-like Alloy
Lubrication System	Yes