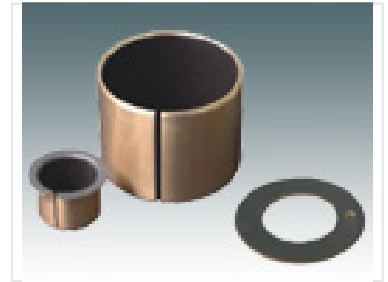


Sleeve Bearing with Thrust Washer

Sleeve bearings support rotating shafts, reducing friction in machinery. These bearings often feature a split design for simplified installation and maintenance.



Product Overview

Precision Sleeve Bearing and Thrust Washer Assembly

This sleeve bearing assembly is engineered to provide reliable support for rotating shafts while effectively reducing friction in industrial machinery. Constructed from high-wear-resistant materials, these components ensure smooth rotational movement and enhanced durability under operational loads. The design features a split configuration, specifically engineered to simplify installation and reduce maintenance downtime in complex mechanical systems.

Technical Specifications

Included Components

- Sleeve Bearing
- Thrust Washer

Bearing Type	Sleeve Bearing (Plain Bearing/Bushing)
Design Features	Split Design, Low Friction Coefficient, High Wear Resistance