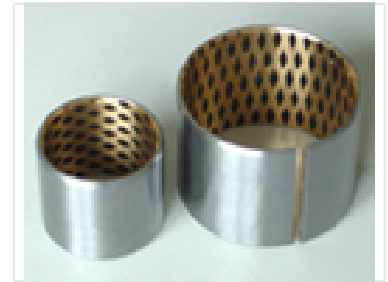


Sleeve Bearing with Lubrication Pockets

Cylindrical sleeve bearings, also known as plain bearings or bushings, reduce friction between moving parts. Some bearings have a split design and internal pockets to hold lubricant.



Product Overview

Precision Sleeve Bearings for Industrial Applications

These sleeve bearings, also known as plain bearings or bushings, are high-performance cylindrical components engineered to minimize friction between rotating machinery parts. Constructed from high-quality bronze or bronze-alloy materials, they feature advanced lubrication pockets designed to retain oil or grease for superior wear resistance. The split design facilitates efficient installation and adjustment, making them an ideal choice for heavy-duty engines, pumps, and diverse industrial systems.

Technical Features

Structural Configuration

Split Design • Cylindrical

Material Composition

Bronze, Bronze Alloy

Lubrication Method

Integrated lubrication pockets for oil or grease retention

Typical Applications

Compatible Equipment

- Industrial Engines
- Liquid Pumps
- Rotating Machinery