

Single-Stage Hammer Crusher

The single-stage hammer crusher directly crushes materials with a large particle size to a smaller size. It is suitable for crushing brittle and medium-hard materials with low moisture content.



ADDITIONAL IMAGES



Product Overview

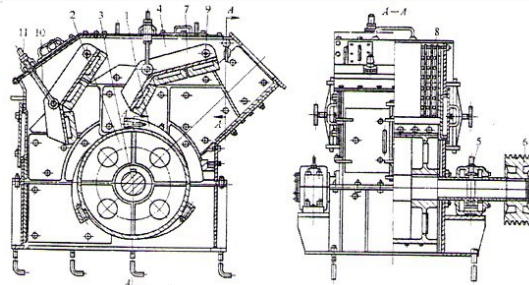


Diagram showing the internal crushing mechanism and material flow path.

High-Efficiency Single-Stage Crushing

This single-stage crusher is designed for direct size reduction of large materials, ranging from 600-1800 mm, down to 25 mm in a single pass. Ideal for building materials, mining, and chemical processing, it effectively handles brittle and medium-hard materials like limestone. By replacing traditional two-stage crushing systems, it simplifies production processes, reduces energy consumption, and minimizes the overall footprint of your facility.

Technical Specifications

Model Specifications

| Model | Rotor Diameter (mm) | Feeding Size (mm) | Capacity (t/h) | Power (kw) |
|--------|---------------------|-------------------|----------------|------------|
| DPC140 | 1400 | d800 | 100-140 | 160-220 |
| DPC160 | 1600 | d1000 | 150-240 | 280-355 |
| DPC200 | 2000 | d1250 | 330-420 | 500-630 |

Maximum Compressive Strength: 140 MPa

Performance Features

Operational Capabilities

1.5 m

Max Feed Size

20 %

Max Powder Content

150 mm

Max Output Size

Key Advantages

Large crushing ratio, Low power consumption, Small footprint, Easy maintenance, Simplified processing