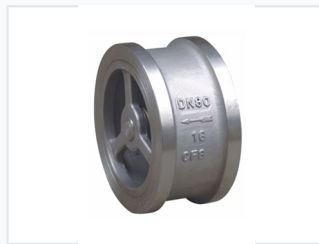


Single Plate Check Valve for Fluid Systems

Single plate check valves are designed for pipelines requiring one-way flow, preventing accidents by allowing flow in only one direction. These valves find extensive use in water source projects, urban water management, power generation, and various industries.



ADDITIONAL IMAGES



Product Overview

High-Performance Single Plate Check Valve

This single disc check valve is engineered for fluid systems requiring unidirectional flow control to prevent backflow and system accidents. Its compact, wafer-style design offers significant advantages in space-constrained installations, providing low fluid resistance and sensitive, reliable sealing performance. Suitable for a wide range of industrial mediums including water, steam, oils, and chemical reagents, this valve is built to meet international standards for durability.

Technical Specifications

Key Performance Indicators

1 Way

Flow Direction

Size Range	1/2" to 48"
Pressure Class	Class 150 - 2500
Design Standards	API 594, ANSI B 16.10, ANSI B 16.5, ANSI B 16.47, API 598

Application & Materials

Compatible Mediums

- Water & Sewage
- Sea Water
- Steam & Air
- Oils
- Foodstuff
- Nitric Acid
- Urea

Seal Options

Metal Seal • Rubber Seal

Common Industries

- Water Supply & Drainage
- Sewage Treatment
- Electric Power
- Petroleum & Petrochemical
- Heat Supply
- Metallurgy