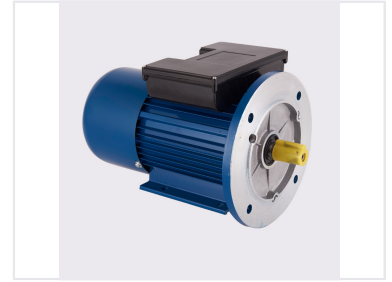
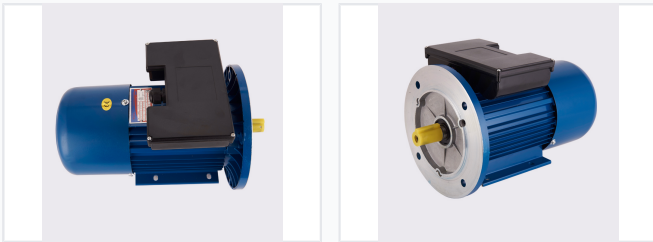


Single-Phase Pole-Changing Two-Speed Asynchronous Motor

This single-phase asynchronous motor features pole-changing technology for two-speed operation. It is designed with a stable structure and reliable running capabilities.



ADDITIONAL IMAGES



Product Overview

Versatile Two-Speed Operation

The YLD series single-phase pole-changing asynchronous motor is engineered for high-performance industrial applications requiring precise, two-speed control. Featuring an efficient finned aluminum frame and 100% copper windings, this motor delivers reliable operation and superior thermal management. Available in frame sizes from 80 to 180 and power ratings up to 22kW, it offers broad flexibility for various machinery and commercial systems.

Performance Specifications

Rated Power Output

0.45 kW

Minimum Power

22 kW

Maximum Power

Available Pole Counts

- 4/2
- 6/4
- 8/4
- 8/6

Frame Sizes

80 to 180

Efficiency Class

IE1, IE2

Compliance and Quality

Standards & Certifications

CCC • CE • GB/T19001-2006 • ISO9001:2015

Mechanical Construction

Mounting Options

- B3
- B5
- B35
- B14
- B34

Core Materials

100% Copper winding