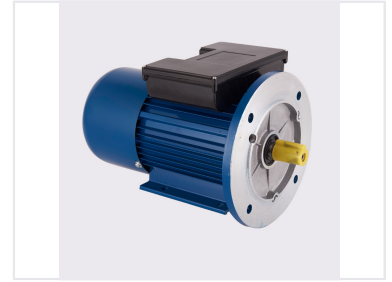
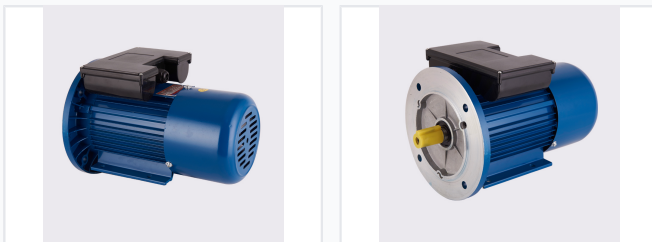


Single-Phase Asynchronous Electric Motor

This single-phase asynchronous motor is designed to meet Russian standards. It features a robust construction with a finned body for efficient heat dissipation and reliable performance in various industrial applications.



ADDITIONAL IMAGES



Product Overview

APE Series Asynchronous Motor

The APE series is a robust single-phase asynchronous motor designed to meet high-performance industrial standards. Built with a finned body for superior heat dissipation, these motors feature 100% copper windings for reliability and efficiency. Available in a wide range of mounting configurations and power ratings, this series is engineered to support demanding industrial and commercial applications.

Technical Specifications

Rated Power Range

0.09 kW
Min Power

315 kW
Max Power

Available Poles

- 2
- 4
- 6
- 8
- 10

Flange Sizes

50, 56, 63, 71, 80, 90, 100, 112, 132, 160, 180, 200, 225, 250, 280, 315, 355

Mounting Options

B3, B5, B35, B14, B34

Compliance and Quality

Certifications

CE • CCC • ISO 9001:2015 • GB/T 19001-2006

Efficiency Class

- IE1
- IE2