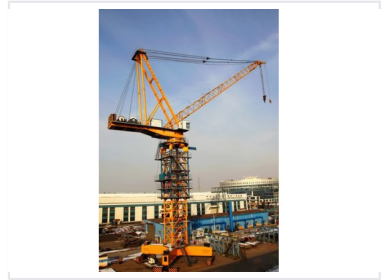


# Self-Climbing Luffing Jib Tower Crane

This self-climbing tower crane has a trolley traveling mechanism on luffing jibs and an attached tower body. It is characterized by a big lifting height, lifting capacity, and wide range of operation.



## Product Overview

### High-Performance Luffing Jib Tower Crane

This self-climbing luffing jib tower crane is engineered for heavy-duty industrial and construction applications, adhering to GB/T 3811-2008 standards for reliability. Featuring a robust structural design, it offers exceptional versatility with multiple jib length configurations up to 65.7m. With a sophisticated hydraulic climbing system and advanced safety mechanisms, this crane is built for precise operation in demanding site environments.

## Key Performance Metrics

### Performance Highlights

**150 t**

Main Hoisting Capacity

**400 kW**

Total Power

**107 m**

Max Hinge Point Height

## Operational Specifications

### Working Configuration Matrix

Parameter	Jib 44.7m	Jib 55.2m	Jib 65.7m
Main Hoist Height (m)	141	151	162
Aux Hoist Height (m)	145	155	166
Rotation Speed (rpm)	0-0.25	0-0.25	0-0.25

## Environmental Conditions

### Operational Environment

Working Temp: -20 to +40 C, Storage Temp: -40 C, Altitude: < 2000m, Working Humidity: 1-80%

## Compliance & Standards

### Certifications

- GB/T 3811-2008: Specifications for Crane Design
- GB/T 13752-92: Specifications for Tower Crane Design
- GB 6067-2006: Safety Code for Cranes
- JB 4315: Electric Control Device of Cranes
- GB 5144-2006: Safety Code for Tower Cranes