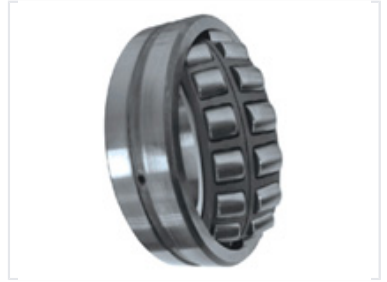


Self-Aligning Spherical Roller Bearing

Spherical roller bearings are self-aligning bearings that accommodate misalignment between the shaft and housing. These bearings are designed to handle heavy radial loads and moderate axial loads in both directions.



Product Overview

Self-Aligning Spherical Roller Bearing

Self-aligning spherical roller bearings are engineered to handle shaft deflection and misalignment between the shaft and housing. Featuring a dual-row design with a spherical outer raceway, they effectively support heavy radial loads alongside moderate axial loads in both directions. These robust components are essential for demanding industrial environments, including mining operations, heavy-duty gearboxes, and high-speed paper manufacturing machinery.

Technical Details

Load Handling Performance

1 Heavy

Radial Load Capacity

2 Moderate

Axial Load Capacity

Bearing Configuration

Self-Aligning, Two Rows of Rollers, Spherical Raceway

Maintenance

Maintenance Requirements

- Regular lubrication required
- Ensure alignment checks
- Optimal performance depends on consistent maintenance

Applications

Typical Industrial Applications

Mining Equipment • Paper Machines • Gearboxes