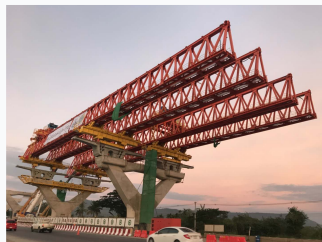


Segmental Bridge Launching Gantry

This specialized construction equipment erects precast concrete bridge segments. The self-launching system moves forward, placing segments into position to form the bridge deck.



ADDITIONAL IMAGES



Overview

Professional Bridge Construction Solution

This segmental launching gantry is a specialized heavy-duty crane engineered for the efficient erection of precast concrete bridge segments. Utilizing advanced self-launching systems, the equipment allows for precise placement of segments in challenging environments using both balanced cantilever and span-by-span methods. Designed for high-capacity performance, this solution minimizes traffic disruption while ensuring safety and structural accuracy during bridge assembly.

Technical Capabilities

Maximum Lifting Capacity

1700 t

Max Capacity

Supported Methods

Balanced Cantilever, Span-by-Span

Comprehensive Solutions

Included Construction Equipment

- Launching gantry
- Girder transporter
- Gantry crane
- Formwork
- Straddle carrier
- Segment lifter
- MSS (Moveable Scaffolding System)
- Form traveller

Operational Safety

Safety Compliance

SAFETY FIRST • High Precision Positioning