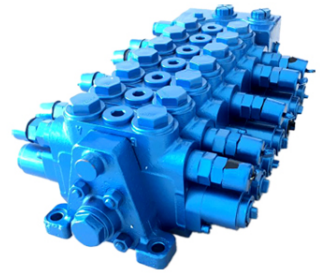


Sectional Hydraulic Directional Control Valve



This directional control valve is used in variable working systems of small excavators and other engineering machinery. It is a hydraulic control valve designed for precise directional control in hydraulic systems.

Overview

High-Performance Sectional Control

The LF12 Series Sectional Directional Control Valve is a robust hydraulic component designed for precise fluid direction and flow control in demanding engineering environments. Its sectional design allows for independent control of multiple hydraulic actuators, offering the flexibility to customize configurations for specific application requirements. Engineered for durability, this valve is an ideal solution for small excavators and heavy-duty machinery requiring reliable performance under pressure.

General Specifications

Parameters (Can be set according to the actual applications.)

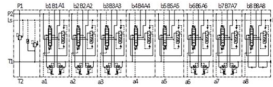
General	
Structure	Flange connection
Installation position	Arbitrarily
Line ports	Threaded connection
Nominal Diameter	12
Hydraulic	
Leakage oil flow (at 180 bar, 32 mm ² /s, 50°C) mL/min	80
Nominal pressure bar	200
Back pressure bar	15
Control pressure bar	30
Control pressure curve	4 ~ 25bar
Using guidelines	
Recommended fixing	At least 3 locations
Flatness of the mounting surface mm	0.5

Technical specifications and mounting guidelines for the LF12 series.

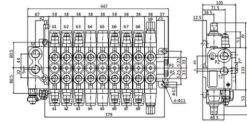
Structure	Flange connection
Installation Position	Arbitrary
Line Ports	Threaded connection
Nominal Diameter	12

Hydraulic Performance

Hydraulic circuit



Outside view



Hydraulic circuit configuration and dimensional layout for system integration.

Key Hydraulic Metrics

200 bar

Nominal Pressure

15 bar

Back Pressure

30 bar

Control Pressure

Leakage Oil Flow

80 mL/min

Control Pressure Curve

4~25 bar

Installation & Usage

Mounting Requirements

- Recommended fixing: At least 3 locations
- Flatness of mounting surface: 0.5 mm

Applications

Recommended Applications

Small Excavators, Engineering Machinery, Heavy-duty Hydraulic Systems