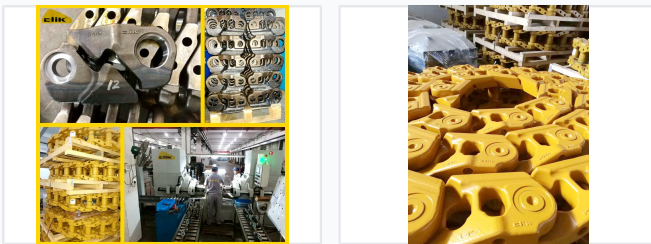


Sealed and Lubricated Bulldozer Track Chains

Qualified track chains feature a PPR structure compliant with OEM specifications. These heavy-duty chains are sealed and lubricated for optimal performance in demanding applications.



ADDITIONAL IMAGES



Product Overview

Sealed and Lubricated Track Chains

These heavy-duty track chains utilize advanced PPR structure and sealed, oil-filled joints to significantly reduce internal friction. Engineered for extreme mining, forestry, and construction environments, they offer a 30% to 50% increase in service life compared to standard greased tracks. With premium European seals and induction-hardened rail surfaces, these chains provide superior wear resistance and operational reliability.

Technical Specifications

Operating Temperature

-50 Minimum Temp	180 Maximum Temp
----------------------------	----------------------------

Service Life Improvement	50 %
---------------------------------	------

Construction & Design

Design & Material Features	PPR Structure, Fully Quenched & Tempered, Induction Hardened Rail, European Seals, Deep Hardened Pins
---------------------------------------	---

Applications

Industries

- Mining
- Forestry
- Quarry
- Construction
- Agriculture

Compatible Equipment

Excavators • Bulldozers • Crawler Machines