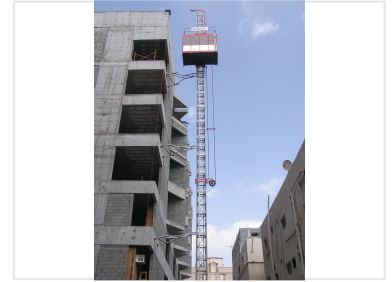
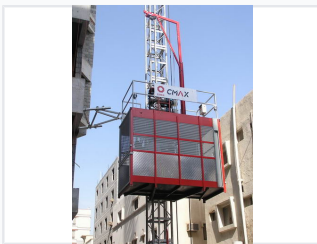


SC200 Building Hoist

The SC200 building hoist provides vertical transportation for construction sites. It efficiently moves personnel and materials to different building levels.



ADDITIONAL IMAGES



Overview

Robust Vertical Transportation

The SC200 Building Hoist is a high-performance solution designed for the efficient movement of personnel and materials on active construction sites. Engineered for stability and safety, it features a reinforced mast structure, a spacious cage design, and integrated safety mechanisms including anti-drop devices and emergency cut-offs. This hoist is built to withstand demanding environments with durable materials and high-quality electrical components.

Mast & Structure

Mast Section Dimensions	650 x 650 x 1508 mm
Steel Material Grade	Q235
Mast Wall Thickness	4.5 mm

Cage Specifications

Cage Dimensions

Capacity Class	Dimensions (L x W x H)
1.2T / 2.0T	3.0m x 1.5m x 2.5m
2.7T / 3.2T	3.8m x 1.5m x 2.5m

Construction Materials	Aluminum Sidewalls, Checked Steel Base, Checked Steel Roof
------------------------	--

Safety Systems

Integrated Safety Devices

- Anti-Drop Safety Device
- Up/Down Limit Switches
- 3-Phase Cut-off ELCB
- Emergency Cut-off
- Side and Roof Door Limit Switches
- Audible Horn

Buffer System

1.2 Spring

1.2T & 2.0T Models

2.7 Hydraulic

2.7T & 3.2T Models

Electrical & Drive

Motor Protection Rating

IP55

Control Components

Telemechanique, ABB, SIEMENS

Finish & Protection

Surface Treatment

- Sand blasting
- 2 Layers Epoxy resin coat

Color (RAL)

Blue (RAL 5002)