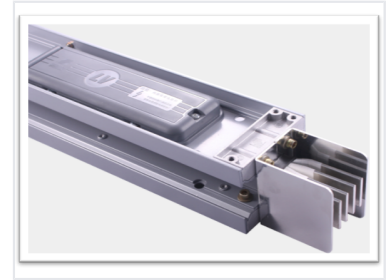


# Sandwich Type Busway System

This low voltage busway system features high-purity electrolytic copper bus bars and a two-piece housing design for reliable performance. Its compact sandwich design minimizes space consumption and includes smart features like a temperature intelligent joint system.



## Overview

### High-Efficiency Sandwich Busway System

This sandwich-type busway system provides a reliable, robust solution for power distribution in commercial and industrial environments. Engineered for high electrical efficiency and low voltage drop, the system features a compact design that ensures excellent mechanical strength. It is built to support diverse power configurations and meets rigorous international safety standards, making it a versatile choice for modern infrastructure projects.

## Electrical Ratings

### Rated Current Range

**4000 A**

Aluminum Conductor Max

**5000 A**

Copper Conductor Max

### Voltage Specifications

690V Rated Operation / 1000V Rated Insulation

### Operating Frequency

50-60Hz

## Configuration & Compatibility

### Wiring Configurations

- 3P3W
- 3P4W
- 3P5W

### Certifications

UL, KEMA, CCC

## Physical & Environmental

### Ingress Protection

IP66

## Material Specifications

### Conductor Current Ratings

Conductor Material	Current Range
Aluminum	250A - 4000A
Copper	250A - 5000A