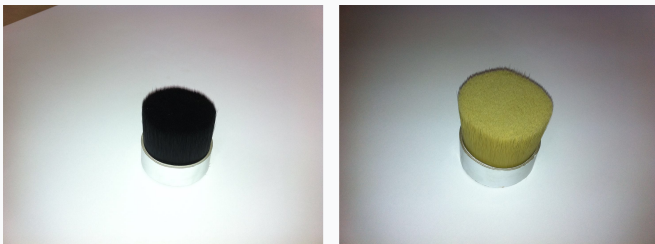


Round Bristle Brush with Metal Ferrule

This round brush features densely packed bristles set in a metal ferrule. It is suitable for various tasks requiring precise and controlled application of liquids or powders.



ADDITIONAL IMAGES



Product Overview

Professional Round Bristle Brush

This round bristle brush is engineered for precision and durability, featuring high-quality boiled bristles that offer enhanced resistance to wear. The design incorporates a robust metal ferrule that ensures the bristles remain securely packed, preventing shedding during intensive use. Ideal for a wide range of tasks, this tool provides excellent control for applying liquids, pastes, and powders across art, cleaning, and industrial applications.

Technical Specifications

Bristle Treatment	Boiled
Ferrule Material	Metal
Shape	Round / Cylindrical

Applications

Suitable Applications	Art, Cleaning, Industrial, Liquid Application, Paste Application, Powder Application
-----------------------	--

Performance Features

Key Benefits

- Enhanced durability through boiled bristles
- Robust metal ferrule prevents shedding
- Densely packed bristles for precise control
- Resistance to wear for long-lasting performance