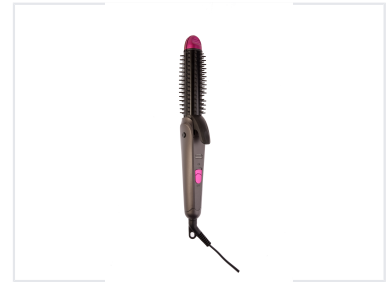


Rotating Hot Air Brush Hair Styler

This hot air brush styler is designed to create various hairstyles. It features a rotating brush head for even heat distribution and adjustable temperature settings.



ADDITIONAL IMAGES



Product Overview

Professional Styling Performance

This versatile rotating hot air brush hair styler is designed to deliver salon-quality results with ease. Featuring advanced PTC heating technology and a protective ceramic coating, it ensures even heat distribution while minimizing heat damage for shiny, healthy-looking hair. Its compact, portable design, combined with a swivel cord and stay-cool tip, makes it an essential tool for both professional stylists and home users on the go.

Technical Specifications

Maximum Temperature

200

Max Temperature

Heating Technology

PTC Heater • Ceramic Coating

Power Requirements

220-240Vac 50-60Hz

Power Consumption

45 W

Design & Dimensions

Convenience Features

- Swivel PVC Power Cord
- Stay Cool Tip
- Hanging Loop
- Indicator Light
- ON/OFF Power Setting

Curler Diameter	30 mm
Straightener Plate Size	100*30mm
Portability	Yes