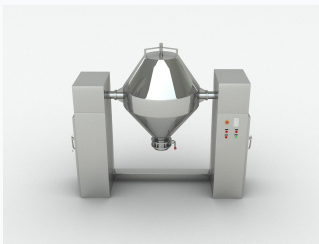


Rotating Double Cone Mixer for Powders and Granules

The rotating double cone mixer is designed for blending dry powders, granules and other solid materials. It is used across the pharmaceutical, food, chemical, and other industries for homogeneous mixing.



ADDITIONAL IMAGES



Product Overview

Efficient Homogeneous Mixing

This rotating double cone mixer is engineered for the thorough blending of dry powders and granules. Featuring a double cone-shaped vessel, the machine allows materials to tumble effectively, ensuring a homogeneous mix. Constructed from high-quality stainless steel with a polished finish, it is designed for durability and ease of cleaning, making it ideal for industries requiring strict hygiene standards.

Key Features

Safety Features

Emergency Stop

Industries Served

Pharmaceutical, Chemical, Food Processing, Feed Industry, Pigment Manufacturing, Electronics

Construction Material

Stainless Steel (Polished inside and outside)

Discharge System

Bottom-mounted discharge valve for easy unloading

Technical Specifications

Performance Metrics

1 High

Mixing Efficiency