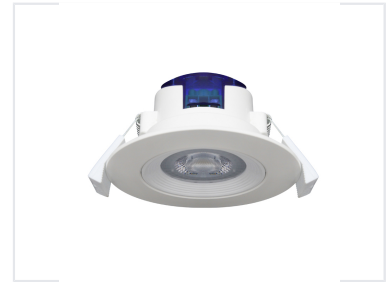


Rotatable LED Downlight

This LED downlight offers a rotatable design, providing users with directional lighting control. Its efficient LED light source ensures long-lasting performance and energy savings.



ADDITIONAL IMAGES



Product Overview

Versatile Lighting Solution

This rotatable LED downlight is designed for both residential and commercial environments, offering superior directional lighting control. Featuring an exquisite design, it ensures excellent heat dissipation and stable lumen output for a long-lasting, energy-efficient performance. It serves as a modern, high-quality replacement for traditional spotlights, seamlessly integrating into various ceiling types.

Technical Specifications

| | |
|-----------------|--|
| Design Features | Rotatable, Modern Aesthetic, White Finish, Directional Control |
| Installation | Spring clip mounting |

Performance

| | |
|-------------------|------------------------------|
| Driver Technology | High-Quality Built-in Driver |
| Heat Dissipation | Yes |

Applications

Suitable Applications

- General lighting
- Accent lighting
- Task lighting
- Residential spaces
- Commercial interiors