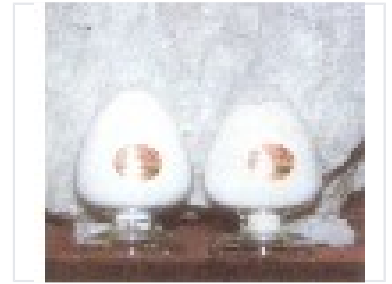


Rotary Abrasive Grinding Attachments

These abrasive grinding attachments are designed for use with electric power tools. They feature a rounded shape and are mounted on a base for secure rotary operation during grinding and polishing.



Product Overview

Rotary Abrasive Grinding Attachments

These rotary abrasive grinding attachments are designed for precision polishing and grinding tasks. Featuring a distinct rounded, bulbous shape with a central circular feature, they are engineered for seamless integration with standard electric rotary tools. Ideal for professional B2B applications, these accessories provide consistent performance for surface finishing and material removal.

Technical Specifications

Design Features

- Rounded, bulbous profile
- Central circular mounting feature
- Rotary operation design

Attachment Type	Rotary Abrasive Attachment
Application	Polishing, Grinding, Surface Finishing
Compatibility	Electric Rotary Tools