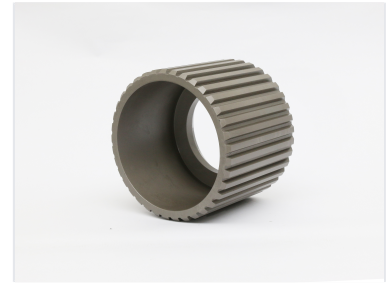


Ring Gear

This ring gear features precision-cut gear teeth around its inner circumference. The outer diameter incorporates evenly spaced mounting holes for secure attachment to other components or structures.



ADDITIONAL IMAGES



Overview

Precision-Engineered Ring Gear

This high-quality ring gear is designed for demanding industrial applications requiring robust torque transmission and precise rotational control. Featuring precision-machined teeth and a durable steel construction, it is engineered for reliability in heavy machinery and rotating platform systems. The inclusion of integrated mounting holes ensures secure and stable attachment, making it an ideal component for complex mechanical assemblies.

Technical Specifications

Common Applications

- Heavy Machinery
- Rotating Platforms
- Torque Transmission Systems

Material	Steel Alloy
Gear Configuration	Internal Teeth, Precision Machined
Mounting Features	Yes

Performance Metrics

Performance Highlights

1 High

Rotational Precision

1 High

Torque Transmission