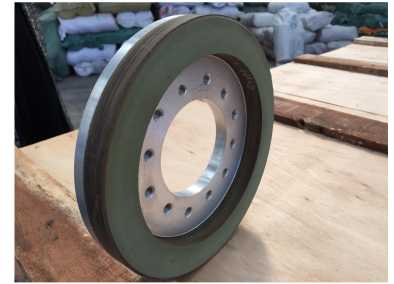
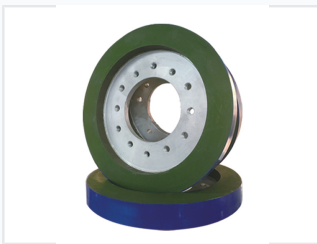


Resin Bond Diamond Squaring Wheel

This resin bond diamond squaring wheel is designed for dry working applications. It is used to make squaring without water on edges of inner wall tiles and rustic tiles, featuring good sharpness, quick heat dispelling, and low working noise.



ADDITIONAL IMAGES



Product Overview

Precision Resin Bond Diamond Squaring Wheel

This high-performance resin bond diamond squaring wheel is specifically engineered for efficient dry working applications. It features a robust resin matrix that securely retains high-quality diamond particles, ensuring consistent stock removal and precise edge finishing. Designed to minimize heat generation during operation, this wheel effectively protects workpieces from thermal damage while offering a long service life for demanding industrial environments.

Technical Specifications

Operating Mode

Dry Working

Bond Type

Resin Bond

Abrasive Material

Diamond

Design and Compatibility

Build Construction

- Diamond abrasive section
- Durable metal core
- Threaded mounting holes

Attachment Method

Threaded mounting holes

Applications

Target Industries

Stone Processing, Industrial Manufacturing, Precision Grinding