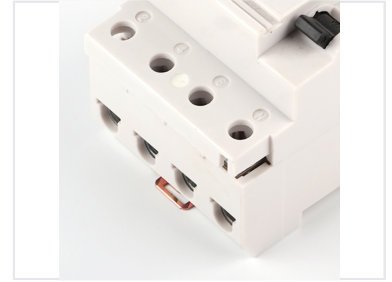


Residual Current Circuit Breaker

This residual current circuit breaker is designed to protect against electrical shock and fire hazards caused by ground faults. It conforms to IEC/EN61008-1 standards and is suitable for residential and commercial applications.



ADDITIONAL IMAGES



Product Overview

Professional Electrical Protection

This residual current circuit breaker provides robust protection against electrical shock and fire hazards caused by ground faults in residential, commercial, and industrial settings. Built with high-quality, flame-retardant PA66 materials and precision-engineered internal components, it offers long-term reliability and enhanced safety. The device features an innovative arc chamber design to manage heat flow and prevent overcurrent damage effectively.

Electrical Specifications

Rated Current

40 A Rated Current	30 mA Tripping Threshold
------------------------------	------------------------------------

Rated Voltage

240 V

Compliance Standards

IEC/EN61008-1, CE

Construction & Materials

Material Composition

- Nonflammable PA66 shell, handle, and trip units
- Zn-coated Q195 steel arc chamber
- 6-rivet aluminum joints for high structural strength

Installation & Environment

Operating Environment

Parameter	Value/Limit
Ambient Temperature	-5°C to 40°C
Max Altitude	2000m
Pollution Level	Level II
Max Humidity	50% at 20°C

Installation Method	Standard Din-rail mounting, recommended vertical installation
----------------------------	---