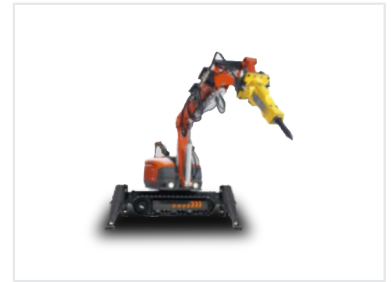


Remote Controlled Demolition Robot with Hydraulic Breaker

This remote-controlled machine is engineered for precision demolition and construction tasks. It features a hydraulic breaker attachment for efficient concrete breaking and material processing.



Overview

High-Performance Demolition Robot

This remote-controlled demolition robot is engineered for precision and efficiency in challenging construction environments. Featuring a versatile hydraulic breaker attachment and a quick-change system for multiple tool heads, it allows for rapid adaptation to various job requirements. With a total weight of 3.5 tons or less, it offers exceptional mobility and stability, making it an ideal solution for urban demolition, renovation projects, and tasks in confined spaces.

Technical Specifications

Total Weight	3.5 t
Weight Constraint	Less than or equal to 3.5 tons

Operational Features

Primary Attachment

Hydraulic Breaker

Mobility Highlights

- Compact design for confined spaces
- High flexibility
- Mobile tracked chassis

Tool Change System	Quick change system for multiple tool heads
Control Method	Remote controlled