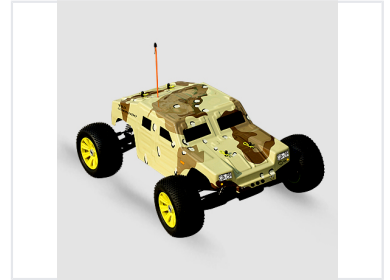


Remote Control Military-Style Camouflage Vehicle

This remote-controlled car features a camouflage design. Its large, knobby tires with yellow rims suggest off-road capabilities.



Product Overview

Rugged Military-Style Performance

The Wild Commando is a high-performance remote-controlled vehicle designed for rugged, off-road recreational use. Featuring a distinct military-style camouflage aesthetic, this vehicle is built to handle challenging terrain with its oversized, knobby tires and advanced suspension system. It combines durability with a detailed design, making it an excellent choice for buyers seeking a reliable and visually striking remote-controlled model.

Design & Aesthetics

Pattern Style	Military Camouflage (Tan, Brown, Green)
Key Visual Features	Military-Style Body, Yellow Rims, Detailed Suspension

Technical Specifications

Terrain Suitability	Off-Road • All-Terrain
Control Method	Remote Control
Tire Configuration	Large Knobby Tires