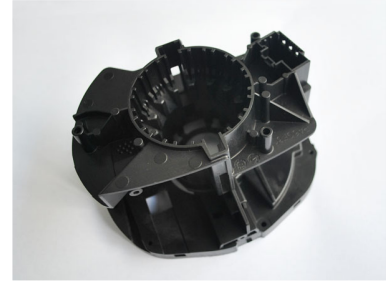


# Refrigerator Component Mould

Mould designed for the production of refrigerator components. It is constructed for high-volume manufacturing, ensuring consistent performance and dimensional accuracy.



## Product Overview

### Precision Refrigerator Component Moulding

This precision-engineered mould is specifically designed for the high-volume manufacturing of refrigerator components. It features optimized cooling channels to ensure efficient thermal management and rapid cycle times, resulting in superior dimensional accuracy and surface finish. Constructed from durable materials, this tool is built for extended service life and consistent performance in demanding production environments.

## Technical Specifications

Compatible Material	PA6.6GF30
Mould Type	Injection Mould

## Quality & Standards

### Management Systems

- ERP System Implementation
- Standardized Process Management
- In-house Laboratory Testing

Certifications	ISO 9001:2008
----------------	---------------

## Capabilities

### Core Competencies

Precision Design • Thermal Management • R&D Support • Rapid Cycle Times