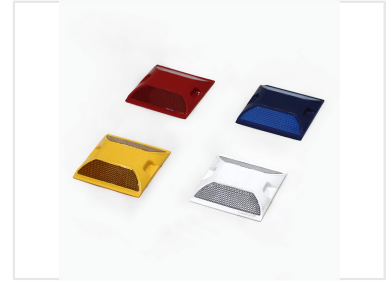
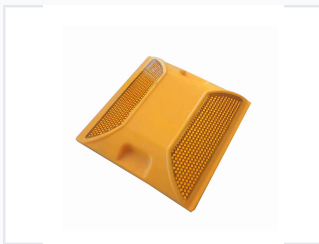


Reflective Road Stud for Traffic Safety

Durable road studs enhance traffic safety by providing clear lane marking and guidance. Featuring high-impact resistant materials and prismatic reflectors, they ensure enhanced nighttime visibility and long-lasting performance.



ADDITIONAL IMAGES



Product Overview

Durable Traffic Safety Solution

This reflective road stud is designed for professional lane marking and traffic guidance in high-traffic environments. Constructed from impact-resistant ABS and PMMA, it ensures reliable performance and high visibility under diverse weather conditions. It serves as an essential tool for improving road safety on highways, roadways, and parking facilities by providing clear visual delineation.

Technical Specifications

Dimensions

100 mm
Length

100 mm
Width

20 mm
Height

Available Colors

- White
- Yellow
- Red
- Blue

Construction Materials

ABS, PMMA

Applications

Primary Applications

Highways • Roadways • Parking Lots