

# Reciprocating Wood Incising Saw

The reciprocating wood incising saw is designed for precise and efficient cutting of wood. It features a robust construction and advanced engineering for clean and accurate cuts.



## Overview



### Industrial Reciprocating Incising Saw

This high-precision reciprocating incising saw is engineered for professional woodworking applications, offering robust construction for demanding industrial environments. It features an advanced control system and high-precision cutting mechanisms that deliver consistent, clean, and accurate results. Designed for efficiency, the machine is ideal for furniture manufacturing and cabinet construction, ensuring both high productivity and user safety.

## Performance Specifications

### Cutting Metrics

**60 mm**

Max Sawing Thickness

**30 m/min**

Returning Speed

**10.1 kw**

Total Power Consumption

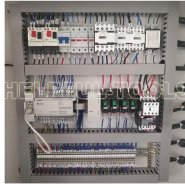
### Blade Configuration

Component	Dimensions	Speed
Main Saw Blade	Ø300*30mm	5600 r/min
Scoring Saw Blade	Ø130*30mm	7200 r/min

## Technical Details

Sawing Machine/Режущая пила/Форматно-раскроечный станок HAJ2500

HAJ2500 Reciprocating sawing saw  
Раскроечный станок/Режущая пила



WEIHAI HELPFUL MACHINERY CO.,LTD



User-friendly control panel for managing precision cutting parameters.

### Motor Power Ratings

- Main saw motor: 7.5kw
- Scoring saw blade motor: 0.75kw
- Turbine reducer: 1.1kw

### Physical Dimensions & Weight

4255-6020 x 4456 x 1230 mm

### Air Pressure

0.7 Mpa

## Features

Sawing Machine/Режущая пила/Форматно-раскроечный станок HAJ2500

HAJ2500 Reciprocating sawing saw  
Раскроечный станок/Режущая пила



WEIHAI HELPFUL MACHINERY CO.,LTD



### Key Highlights

Industrial Grade, Precision Cutting, Automated Control Panel, High-Stability Frame