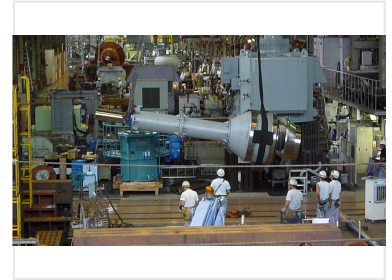


Raw Water Pumping Station

This is a raw water pumping station. It is designed for large-scale water projects.



Project Overview

Shanghai Qing CaoSha Pumping Station

This large-scale infrastructure project features a pumping capacity of 7.08 million tons per day, serving as a critical water supply node for downtown Shanghai. The station plays a vital role in water quality management and supplies essential resources to over 10 million people. The facility utilizes heavy-duty pumping equipment integrated into a complex urban water supply network.

Project Details

Daily Pumping Capacity

7.08 million tons/day

Capacity

Scope of Supply

- Supply of 12 large pump units
- Supply of 12 motor units
- Installation guidance services

Location

Shanghai

Signing Date

August 2008

Project Category

Water Supply, Infrastructure, Equipment Supply