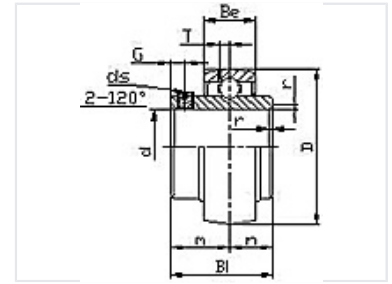


# Radial Bearing Unit for Mechanical Power Transmission

This radial bearing unit is designed for mechanical power transmission systems. It features a compact design with a bearing insert, suitable for supporting rotating shafts and reducing friction.



## Product Overview

### Industrial Reliability for Power Transmission

This radial bearing unit is precision-engineered for demanding mechanical power transmission systems. Featuring a robust bearing insert and a secure shaft locking mechanism, it provides reliable support for rotating shafts while effectively minimizing operational friction. The unit comes pre-lubricated to ensure an extended service life and sustained performance in various industrial environments.

## Key Features

### Core Characteristics

Pre-lubricated, Compact design, Secure locking mechanism, Reduced friction, Industrial grade

## Technical Specifications

### Primary Performance Metrics

**120 degree**

Locking Angle

### Lubrication Status

Yes