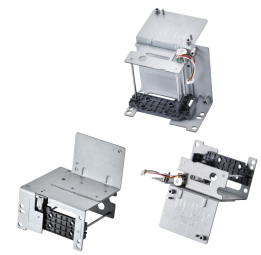
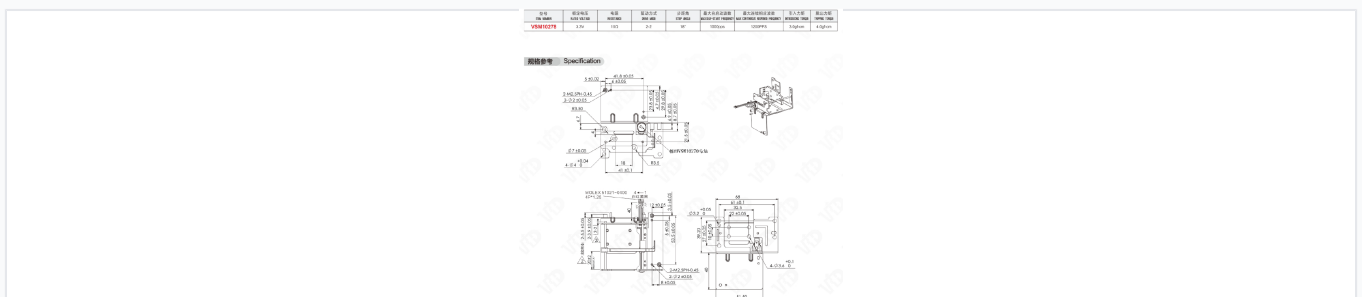


Projector Motorized Positioning Module

This precision-engineered module is designed for business automation equipment, specifically projectors. It incorporates both mechanical and electrical components for precise movement or positioning within the projector's optical system.



Product Overview



Technical drawing and specification reference for the VSM10278 module.

Precision Positioning Module

The VSM10278 is a precision-engineered motorized positioning module designed specifically for business automation equipment, such as projectors. It features a robust metal frame construction that ensures long-term durability and stability within complex optical systems. This compact unit integrates electrical and mechanical components, including a motor and wiring, to facilitate accurate movement and alignment.

Electrical Specifications

Rated Voltage	3.3 V
Resistance	100 Ω
Drive Mode	2-2

Performance Metrics

Key Performance Metrics

18 °

Step Angle

1000 pps

Max Self-Start Frequency

1200 PPS

Max Continuous Response Frequency

Torque Specifications

Torque Performance

Metric	Value
Introducing Torque	3.0 gf-cm
Tripping Torque	4.0 gf-cm

Connectivity and Integration

Connector Type	MOLEX 51021-0400 4P*1.25
Wiring Colors	White, Red, Yellow, Black