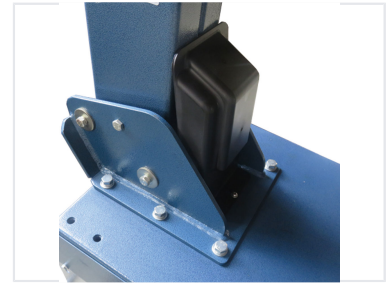


# Professional Tire Changer Machine

This professional-grade tire changer is designed for efficient and safe tire removal and installation. It features adjustable clamps to accommodate a wide range of tire sizes and includes a bead breaker for easy tire separation from the rim.



## ADDITIONAL IMAGES



## Overview

### Professional Tire Changer

This professional-grade tire changer is engineered for the efficient and safe maintenance of standard, low-profile, and run-flat tires. Designed for automotive service centers and tire shops, the machine features a robust construction and a powerful motor to ensure reliable operation. With its pneumatic tilting back post and versatile clamping capabilities, it provides a comprehensive solution for car and light commercial vehicle tire servicing.

## Technical Specifications

### Key Performance Metrics

**1.1 kw**

Motor Power

**70 dB(A)**

Noise Level

**10 Bar**

Max Air Supply

### Wheel Capacity

Feature	Capacity
Inside Clamping	14"-28"
Locking Rim	10"-28"
Max Wheel Diameter	50"
Max Wheel Width	18"

## Physical Dimensions

### Weight Specs

- Gross Weight: 370 KG
- Net Weight: 340 KG

### Overall Dimensions

1150x900x990mm

## Features

### Power Supply Options

110V • 220V • 380V

### Key Features

Pneumatic tilting back post, Pneumatic bead breaker, Run-flat tire compatible, Low-profile tire compatible, Reinforced post structure