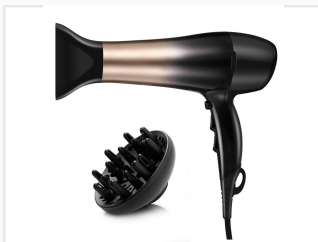


Professional Ionic Hair Dryer with Attachments

This ionic hair dryer is designed for fast and efficient hair drying, minimizing potential heat damage. It features multiple heat and speed settings, along with a cool shot button to help set styles.



ADDITIONAL IMAGES



Product Overview

Professional Ionic Performance

This professional-grade ionic hair dryer is engineered for fast, efficient drying while prioritizing hair health by minimizing heat damage. Utilizing advanced ionic technology, it effectively reduces frizz and enhances natural shine for a smoother finish. Designed with versatility in mind, it includes essential attachments for both precision styling and curl enhancement, making it a reliable tool for professional salon or home use.

Technical Specifications

Key Features

- Advanced ionic technology for frizz reduction
- Multiple heat and speed settings
- Cool shot button for style setting
- Ergonomic design for comfortable handling
- Long-lasting motor

Safety Certifications

ALCI Safety Plug

Accessories & Maintenance

Included Attachments

- Concentrator nozzle for precision styling
- Diffuser attachment for curls and waves

Maintenance Features

- Removable filter for easy cleaning
- Hanging loop for storage