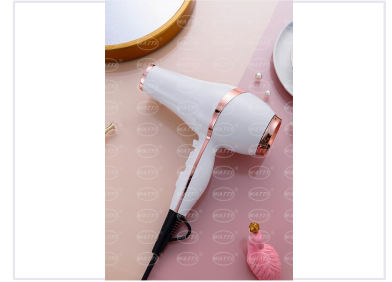


Professional Ionic Hair Dryer

This professional hair dryer features multiple heat and speed settings for customized styling. Advanced ionic technology reduces frizz and enhances shine, leaving hair smooth and healthy.



ADDITIONAL IMAGES



Overview

Professional Performance Hair Dryer

This professional-grade hair dryer combines powerful 2000-2200W performance with advanced ionic and ceramic technology to deliver salon-quality results. Designed for efficiency and versatility, it features multiple heat and speed settings alongside a cool shot function to cater to diverse styling needs. With its ergonomic build, low-noise operation, and included styling attachments, this unit is an essential tool for professional styling environments.

Technical Specifications

Power Output

2200 W
Max Power

Performance Settings

Feature	Count
Heat Settings	3
Speed Settings	2

Motor Type

A.C Motor, D.C Motor

Features & Technology

Integrated Technologies

Tourmaline Ionic • Ceramic Radiation • Keratin Infusion

Included Attachments

- Professional concentrator (2 styles)
- Diffuser

Usability Features

- Freeze shot button
- Low noise operation
- High wind speed
- Removable filter