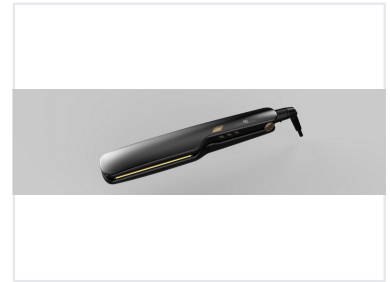
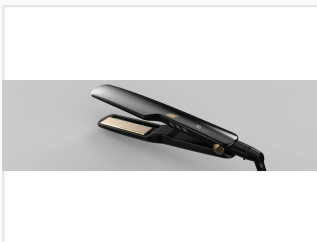


Professional Hair Straightening Iron with Adjustable Temperature

This professional hair straightener uses advanced heating technology to ensure consistent temperature for smooth styling. It features adjustable temperature settings, rapid heat-up time, and ceramic plates for even heat distribution, minimizing hair damage and maximizing shine.



ADDITIONAL IMAGES



Overview

Professional Styling Performance

This professional hair straightening iron is engineered for versatility and precision, making it an ideal choice for salon or personal use. Featuring advanced heating technology and ceramic-coated plates, it ensures consistent heat distribution to minimize damage while maximizing shine. With adjustable temperature settings and a digital display, users can achieve precise styling results on all hair types.

Technical Specifications

Heating Technology	Advanced rapid heat-up
Plate Material	Ceramic-coated
Temperature Control	Yes
Display	Digital

Design & Ergonomics

Cord Type	Swivel cord
Handle Design	Ergonomic, heat-resistant

Safety & Features

Styling Capabilities

- Straightening
- Curling
- Creating waves

Key Safety Features	Automatic shut-off, Heat-resistant handle
---------------------	---

Performance Metrics

Performance Highlights

190 °C

Operating Temp