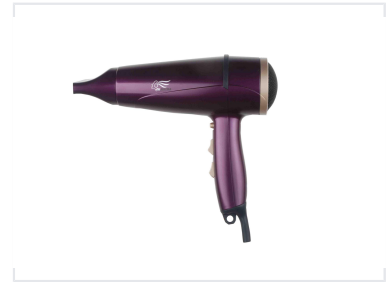


Professional Hair Dryer with Multiple Settings

This professional hair dryer is equipped with a powerful motor to ensure swift and effective drying. It features adjustable heat and speed settings, allowing for a tailored drying experience for various hair types.



Product Overview

High-Performance Salon Hair Dryer

This professional-grade hair dryer is engineered for rapid and efficient drying in demanding environments. Featuring a powerful motor, it provides versatile 2-speed and 3-heat configurations to accommodate all hair types. With integrated overheat protection and an ergonomic design, this unit ensures both safety and comfort during prolonged professional use.

Technical Specifications

Performance Metrics

2200 W

Max Power

240 V

Max Voltage

50 Hz

Frequency

Operating Settings

- 2 Speed settings
- 3 Heat settings
- Cool shot function

Safety and Compliance

Quality Approvals

LVD, EMC, GS, CB, RoHs, PAH

Logistics

Shipping Information

Item	Value
Gift Box Size	23.5 x 9.5 x 26.5 cm
Carton Box Size	47.5 x 31.5 x 59 cm
Units per Carton	12
20' Container Load	3924 pcs
40' Container Load	7860 pcs
40HQ Container Load	9348 pcs