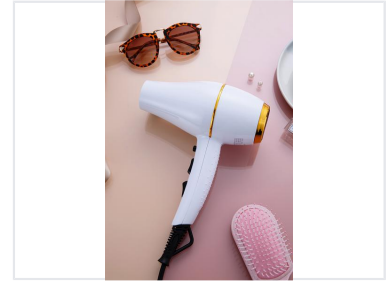


# Professional Hair Dryer with Concentrator Nozzle

This professional hair dryer features a powerful motor for fast and efficient drying. It includes a concentrator nozzle for precise styling and enhanced airflow control.



## ADDITIONAL IMAGES



## Product Overview

### Professional Performance Hair Dryer

This professional-grade hair dryer is engineered for efficiency and precision, featuring a powerful 2000W AC motor. Designed for versatility, it offers multiple heat and speed settings alongside advanced ionic and ceramic technology to protect hair health. With an ergonomic design, low-noise operation, and included styling accessories, it is an ideal tool for demanding salon or home use.

## Technical Specifications

Power Output	2000 W
Motor Type	Professional AC Motor
Heat Settings	3
Speed Settings	2
Cool Shot Function	Yes

## Key Features

### Included Accessories

- 2 x Concentrator Nozzles (different styles)
- Diffuser

### Usability Features

Low Noise • High Wind Speed • Removable Filter • Overheat Protection • Hanging Loop

### Integrated Technologies

Tourmaline Ionic, Ceramic Radiation, Keratin Infusion