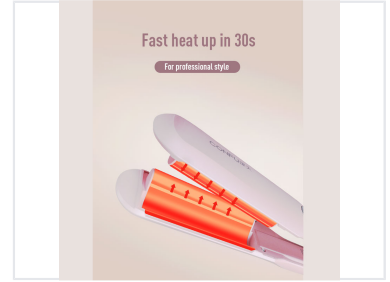
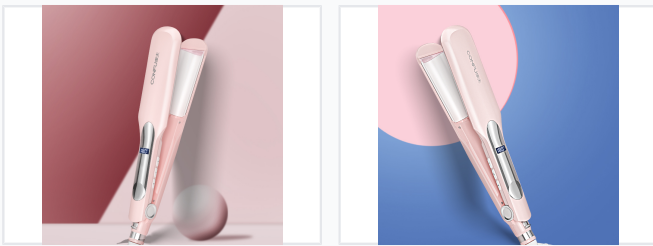


Professional Ceramic Hair Curler with Adjustable Temperature

This professional hair curler is equipped with ceramic plates that ensure even heat distribution. It features adjustable temperature settings displayed on a digital screen and a swivel cord for ease of use.



ADDITIONAL IMAGES



Product Overview

Professional Styling Performance

This professional ceramic hair curler is engineered for efficient, high-quality styling, featuring advanced heating elements for consistent and even heat distribution. Designed to minimize hair damage, it incorporates rapid heat-up technology that reaches optimal styling temperatures in just 30 seconds. The ergonomic design and swivel cord ensure comfortable handling and precise control for a variety of professional-grade hairstyles.

Performance Metrics

Heat-up Time

30 seconds

Rapid Heat-up

Temperature Control

Yes

Technical Features

Design Elements

- Digital temperature display
- Swivel cord
- Ergonomic handle

Plate Material

Ceramic

Safety Features

Automatic shut-off, Even heat distribution