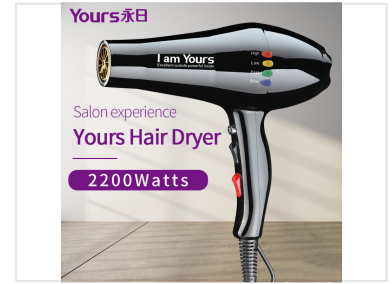
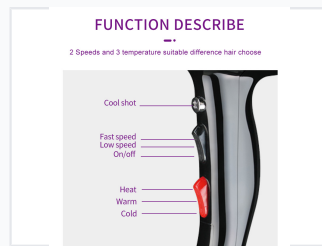
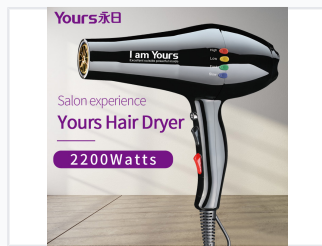


Professional AC Motor Hair Dryer with Cool Shot

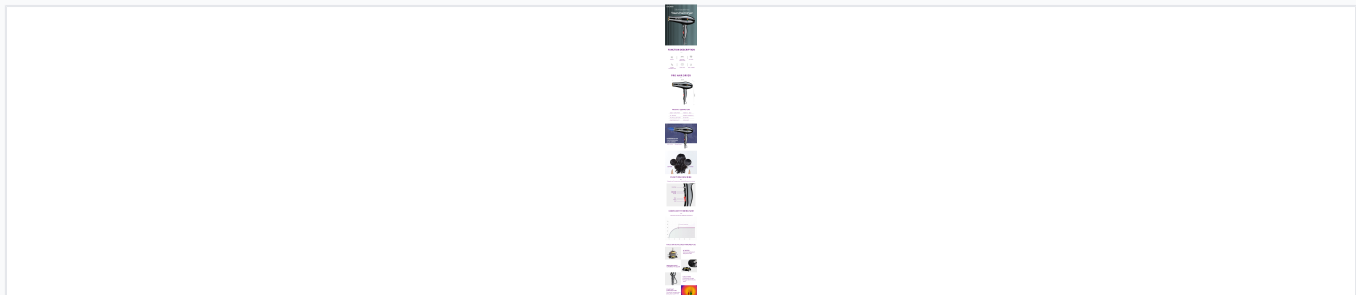
This professional hair dryer features an AC motor with a power range of 1800-2200W and operates at 220V-240V 50Hz. It includes two-speed and three-temperature settings, along with a cool shot function and two concentrator nozzles.



ADDITIONAL IMAGES



Product Overview



Comprehensive overview of the hair dryer's professional features and technical parameters.

Salon-Quality Performance

This professional-grade hair dryer is engineered with a powerful AC motor to deliver fast and efficient drying performance. With versatile speed and temperature settings, it caters to diverse hair types and styling requirements, while the dedicated cool shot function locks in styles for long-lasting results. Designed for both professional and home use, it incorporates safety features like overheat protection and constant temperature technology to ensure hair health and ease of maintenance.

Technical Specifications

Power Output

2200 W
Max Power

Voltage & Frequency

220V-240V, 50/60Hz

Motor Type

AC Motor

Functionality & Features

Speed Settings	2
Temperature Settings	3
Integrated Functions	Cool Shot, Overheat Protection, Constant Temperature, Removable Back Cover

Physical Attributes

Included Accessories	<ul style="list-style-type: none">• 2 x Concentrator Nozzles
Design & Convenience	Cable Hang, Professional-length Cable, Ergonomic Handle