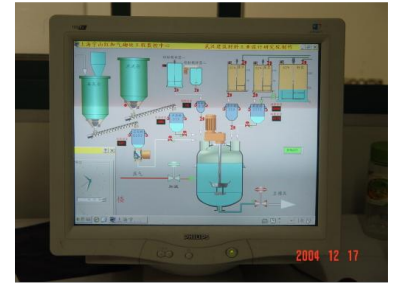


Process Monitoring and Control System Interface

This is an interface for a process monitoring and control system. It displays a schematic representation of an industrial process with real-time data and status indicators.



System Overview

Industrial Process Control Interface

This process monitoring and control system interface provides a centralized platform for managing complex industrial workflows. It features real-time data visualization of critical process components, including tanks, conveyors, mixers, and control valves. Designed for precision, the system enables operators to effectively monitor and manage the mixing and transfer of fluids or materials within a manufacturing environment.

Primary Application	Aerated concrete engineering and material processing control
----------------------------	--

System Version Date	December 17, 2004
----------------------------	-------------------

Technical Capabilities

Monitored Components

- Industrial Tanks
- Conveyor Systems
- Mixers
- Control Valves

Interface Features	Real-time Data Readouts, Schematic Visualization, Status Indicators, Process Automation
---------------------------	---