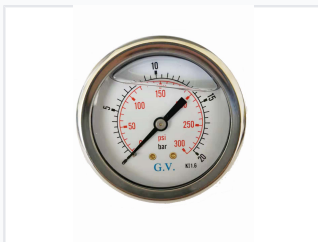


Pressure Gauge Manometer

This pressure gauge is designed to measure pressure in both psi and bar units. The gauge features a circular dial with clear markings, housed in a robust metal casing, making it suitable for various industrial and commercial applications.



ADDITIONAL IMAGES



Overview

Precision Pressure Monitoring

This robust manometer pressure gauge is engineered for accurate pressure measurement across a wide range of industrial and laboratory applications. Featuring a durable metal housing and a reliable threaded brass connector, it ensures long-lasting performance in demanding environments. The clear, dual-scale dial allows for convenient and precise monitoring in both psi and bar units.

Technical Specifications

Pressure Range (PSI)	300 psi
Accuracy Class	1.6
Measurement Units	psi, bar

Construction

Design Features

- Robust metal housing
- Threaded connector
- Dual-scale circular dial

Casing Material	Metal
Connector Material	Brass

Applications

Typical Applications

Industrial • Laboratory • Commercial