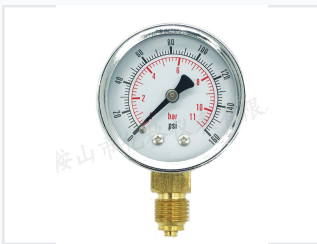


Pressure Gauge 0-11 bar / 0-160 psi

This pressure gauge measures pressure from 0 to 11 bar and 0 to 160 psi. It features a circular dial with clear markings and is suitable for pneumatic, hydraulic, and other pressure-sensitive systems.



ADDITIONAL IMAGES



Overview

Professional Pressure Gauge

This 63mm pressure gauge provides accurate and reliable measurement for pneumatic and hydraulic systems. Featuring a durable stainless steel, non-magnetic case and robust brass internals, it is designed for consistent performance in various industrial environments. The dual-scale display allows for simultaneous readings in both bar and psi, ensuring compatibility with international standards.

Technical Specifications

Pressure Range

11 bar

Max Pressure

160 psi

Max Pressure

Gauge Details

Feature	Specification
Dial Size	63mm
Accuracy	2%
Lens Material	Acrylic
Connection Thread	1/4" BSPP
Connection Location	Back

Construction & Materials

Case Features

- Non-magnetic housing
- Glycerine-ready design (not pre-filled)

Build Materials

Stainless Steel Case, Brass Internals, Brass Connection, Acrylic Lens