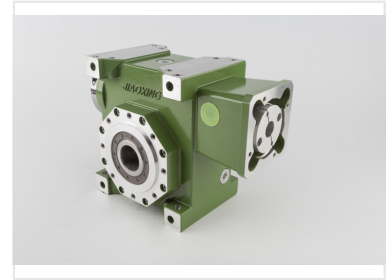
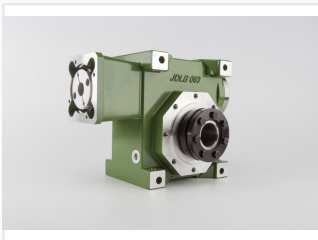


# Precision Worm Gear Unit for Industrial Machinery

This precision worm gear unit is designed for smooth and efficient power transmission. Its robust construction and high-quality bearings ensure durability and reliability in harsh operating environments.



## ADDITIONAL IMAGES



## Product Overview

### High-Precision Worm Gear Unit

This high-precision worm gear unit is engineered as a cost-effective, high-performance alternative to traditional planetary gearboxes. Designed for demanding industrial environments, it features robust construction with a rigid housing and precision-engineered internal components. It provides smooth, reliable rotary motion and efficient power transmission, making it an ideal solution for automation systems and robotics requiring precise motion control.

## Technical Specifications

### Recommended Applications

- Industrial automation systems
- Robotics
- Rotary motion control
- Power transmission systems

Series	JDLB
Model Variants	JDLB 063, JDLB63-30-C2, JDLE 063
Gearbox Type	Worm Gear

## Key Features

### Performance Highlights

**1 High**

Precision Level

**1 High**

Cost Efficiency

### Design Advantages

Robust Construction • Versatile Mounting • Smooth Transmission • High Durability