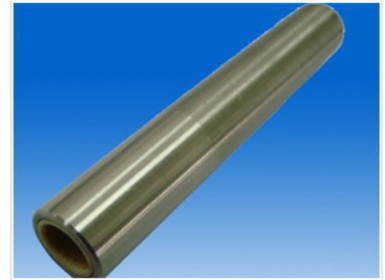


Precision Steel Shaft for Linear Motion

High-precision steel shaft manufactured for smooth, reliable linear motion. It features a hardened surface for wear resistance and is suitable for linear bearings and automation equipment.



Product Overview

Precision Engineering for Linear Motion

This high-precision steel shaft is engineered to deliver smooth and reliable linear motion for demanding industrial applications. Manufactured from high-carbon chromium steel with a hardened surface, it offers exceptional wear resistance and an extended service life. The product is finished to a superior surface quality of Ra 0.2 μm , making it an ideal component for linear bearings, automation systems, and precision machinery.

Technical Specifications

Surface Hardness

60 HRC
Min Hardness

64 HRC
Max Hardness

Material	High-carbon chromium steel
Surface Finish (Ra)	0.2 μm

Application

Recommended Applications	Linear Bearings, Automation Equipment, Precision Machinery
--------------------------	--

Availability

Available Variants

- Various diameters available
- Customizable lengths